

ftp.tv

driving tomorrow's vision today

System Features

- Global Internet Distribution
- Automatic Upload
- Low Cost
- Own Branding under license
- MPEG4, MPEG 1 and 2 support
- PC or Set-Top Box Receiver
- Uses discreet ActiveX and Active server components

ftp.tv is an integrated Web Management tool for the creation and management of quality video content to be delivered to IP Set Top Boxes (STBs) via the Internet. It is suitable for limited bandwidth networks, such as ADSL, and delivery to remote sites.

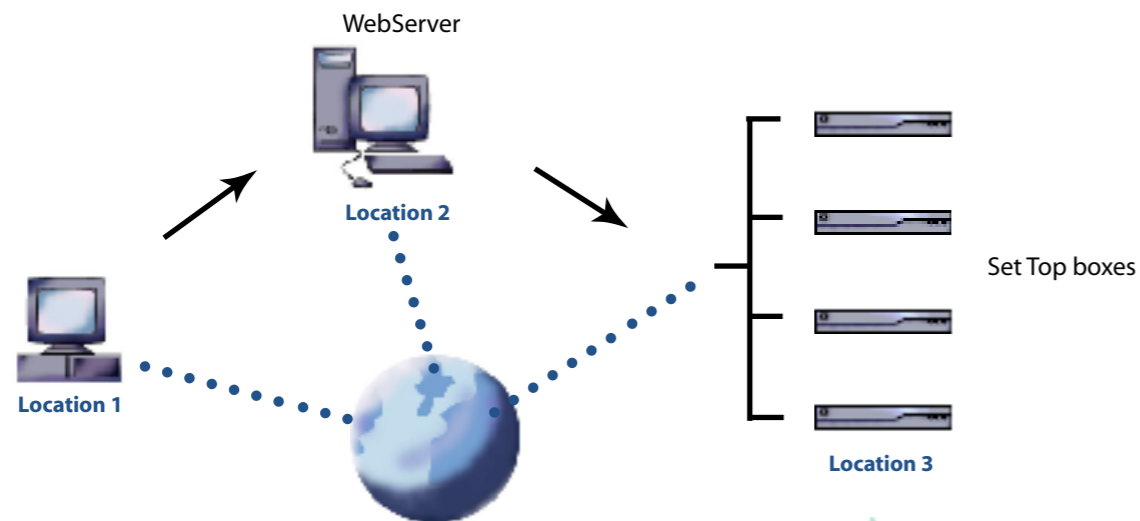
Video content can be uploaded automatically to a client STB without the need for the client to request or interact with the box. All controls remain in the hands of the Web Server administrator.

Applications include distance learning, remote broadcast play-out and point-of-sale retail solutions such as in-store plasma screen displays.

Content can be co-ordinated from various remote locations and made available on a central server for further distribution to multiple destinations.

An Electronic Programme Guide can be displayed at the client through an ActiveX control which also functions as an ftp server and playout scheduler.

This off-the-shelf solution can be fully configured and branded under license from Breeze Technologies, enabling integrators and developers to offer a customised solution to their own clients.



FTP Manager

FTP Manager is an Active Server Component for IIS (Microsoft Web Server). It hosts an FTP Server and allows you to control schedule management for the programmes and delivery of content to the STBs. FTP Manager requires IIS (Microsoft Web Server) to be installed.

The main control Screen is an intuitive and simple interface for uploading content to remote clients.



EPG Control

EPG Control: is an ActiveX Control which incorporates an Electronic Programme Guide and resides on the STB or client PC. Its functions include an FTP Server, a scheduler and an EPG to display the available programmes on the STB. EPG control is also a fully functional FTP Server. The control supports MPEG1, 2 and 4 and HTML content.

The EPG Control will automatically re-size the HTML page to Full Screen. It also handles removing the mouse pointer.



FTP Upload

FTP Upload is an independent ActiveX control which automatically uploads content from a local machine to the FTP Server and has a built-in progress bar.

This is the main upload Screen from here content can be uploaded to the Server and then distributed by a defined group or groups to the various remote clients.

